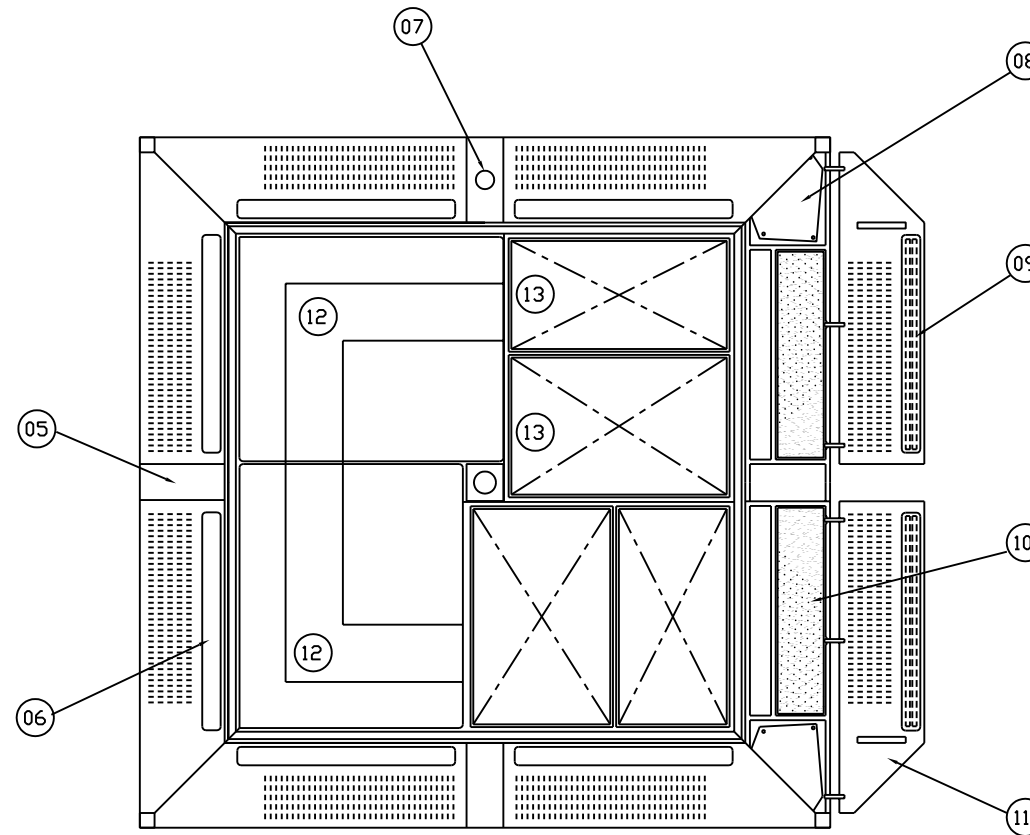
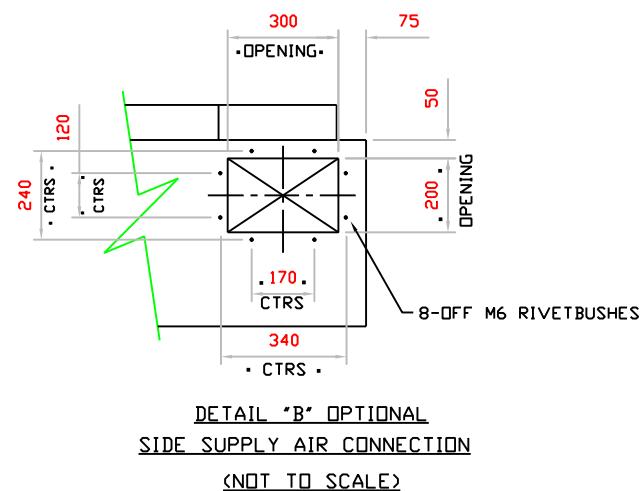
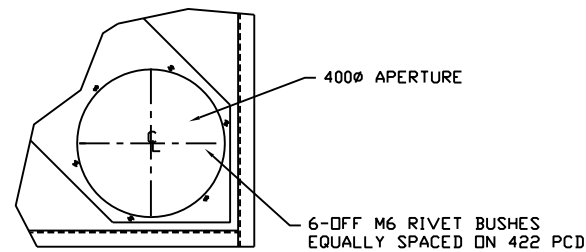
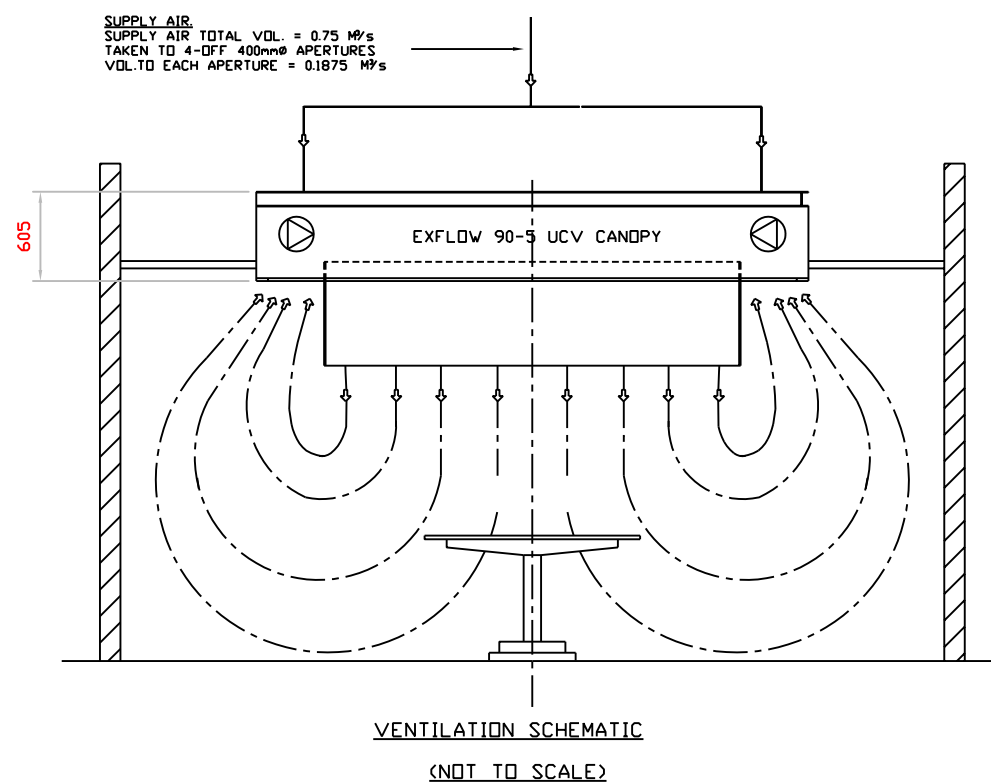


PLAN VIEW OF EXFLOW 90-5 UCV CANOPY



UNDERSIDE VIEW OF EXFLOW 90-5 UCV CANOPY



LEGENDS

- 01) - 4-OFF 400Ø SUPPLY AIR CONNECTIONS (SEE DETAIL "A")
- 02) - EXFLOW MOUNTING FRAME : 4-OFF 100X50 RSC 3690LG. BOLTED TOGETHER ON SITE TO FORM FRAME.
- 03) - OPENING FORMED IN CENTRE OF EXFLOW FOR OPERATING LIGHT STEM. 200x200
- 04) - 4-OFF 160X130 BLANKING PLATES, NOTE IF BODY EXHAUST/AUDIO PENDANT INSTALLED ONLY TWO-OFF PLATES FITTED
- 05) - 4-OFF PENDANT BOTTOM CLOSURE PLATES, NOTE IF BODY EXHAUST/AUDIO PENDANT INSTALLED ONLY TWO-OFF PLATES FITTED, ONE WITH SPEAKER
- 06) - CANOPY LIGHTS. ACRYLIC PRISMATIC DIFFUSERS
- 07) - MAGNEHELIC GAUGE INDICATING PRESSURE DROP ACROSS HEPA FILTERS.
- 08) - 4-OFF FAN ACCESS DOORS
- 09) - 16-OFF POLYLUX 4000, T8 FLUORESCENT TUBES 36W
- 10) - 8-OFF PRE-FILTERS. EU3
- 11) - 8-OFF UNDERSIDE HINGED PANELS, COMBINING INLET GRILLES AND CANOPY LIGHTS
- 12) - 4-OFF DIFFUSER DOORS
- 13) - MAIN HEPA FILTERS, EFFICENCY 99.997% @ 0.3 MICRONS. EU13

NOTES

OVERALL DIMENSION OF EXFLOW CANOPY 3740x3740x605
 APPROXIMATE WEIGHT OF EXFLOW CANOPY 1500KG
 TYPICAL DETAIL OF EXFLOW CANOPY SUPPORT STEELWORK
 SEE DRAWING EX90/66

COPYRIGHT
 This drawing is copyright and may not be altered, reproduced or used other than for the Contract Works for which it is issued without the written permission of HOWORTH AIRTECH LTD.

STATUS OF DRAWING
 The purpose of this drawing when issued as a Tender Drawing is to enable tenderers to interpret correctly the design and to submit competitive tenders for the works.
 A Tender Drawing whether original or amended shall not be used as an installation Drawing except under the terms contained in the conditions of Tender

WARNING
 Do not scale this drawing.
 Verify all dimensions and structural details on site.
 If in doubt, ask before acting

RELATED DOCUMENTS
 Read this drawing in conjunction with the appropriate Specification(s)

CHECKING
 This drawing has been generated using a Computer Aided Drafting system. As the system generates a new drawing at each revision, only the latest edition will have been initialised as checked.

rev	date	designed	drawn	CAD	checked
A	02/04/97	SJH	SJH	R12	
B	26/01/98	SJH	SJH	R13	

status/amendments	
A	REDRAWN ON AUTOCAD
B	Supply connection to exflow modified from 250mmØ to 400mmØ

NOTES:

**HOWORTH
airtech**

HOWORTH AIRTECH LIMITED
 LORNE STREET . FARNWORTH . BOLTON . BL4 7LZ . ENGLAND.
 UK . TEL : 01204 571131 . FAX : 01204 862378
 INTERNATIONAL TEL: 441204 571131 . FAX: 441204 862378

project title

drawing title
 STYLE1 ARRANGEMENT OF
 EXFLOW 90-5 INTEGRAL FAN
 UCV CANOPY

north	scale 1:20 (A1)
	units millimetres
project no.	drawing no. EX90/148
	rev B